

ARM - LAPEL - BREAST

METEOROLOGICAL OBSERVERS

BADGES

Aeroplane with MET or METOC beneath - under training.



Naval Airmen.



NA Charles
under training.

Aeroplane with MET or METOC beneath - under training.



W.R.N.S.

Aeroplane with MET or METOC beneath.

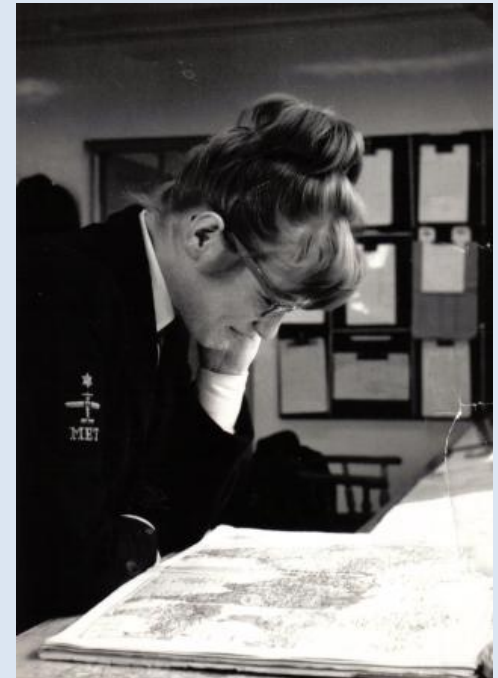
Meteorological Observer 3rd Class.



Naval Airman.



Able Wren.



Modelled on the arm of
Able Wren
Meg Murray
(now Marvin)

Aeroplane with two stars, one above, one below, MET or METOC beneath.

Meteorological Observer 2nd Class.



Passed for
Leading Airman.

Aeroplane with two stars, one above, one below, MET or METOC beneath.

Meteorological Observer 2nd Class.



Passed for
Leading Wren.



As modelled on the arm of
Anne Whalley

Aeroplane with crown above, MET or METOC beneath.

Meteorological Observer 1st Class.



Passed for
Petty Officer.



Chris Robertson
(Jan Robbie)
is our model for
this one.

Aeroplane with crown above, MET or METOC beneath.

Meteorological Observer 1st Class.



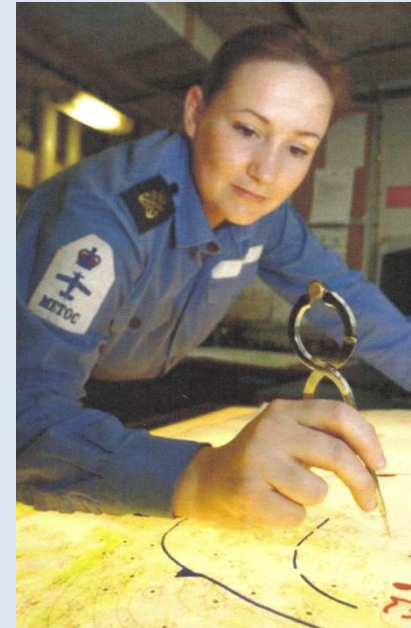
Passed for
Petty Officer Wren.

Aeroplane with crown above, MET/METOC beneath.

Tropical Uniform - Blue Woven on white background (King's Crown).



Meteorological Observer 1st Class
Passed for Petty Officer.

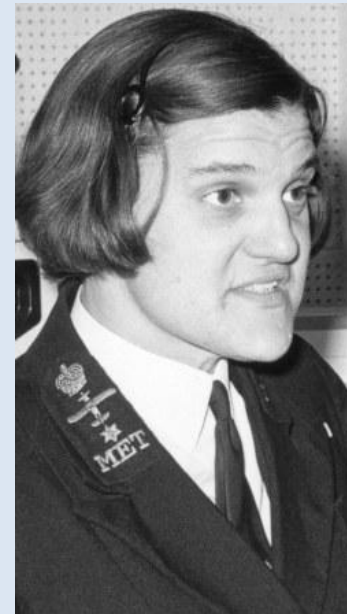


Wren of the modern era.

Aeroplane with crown above, MET or METOC beneath.



Chief Petty Officer Wren with
three or more years in rate.



As shown on the lapel of CPO
Dorothy Ball (nee Pilcher)

**Aeroplane with crown above,
MET or METOC beneath.**



**Chief Petty Officer with three or
more years in rate.**

**Aeroplane with crown above,
MET beneath.**



**Chief Petty Officer with three or
more years in rate.**

Blue printed on white background (King's Crown).



Late 1940's Wrens
Branch Badge.



As modelled here.



King's Crown (KC) indicates 1901-1952



Queen's Crown (QC) post-1952.

Pay & Allowances P.O. Howard.

Daily Flat Rate

Pay on entry	-	10s. 6d.	Per day.
Able Rate (B)	-	12s. 6d.	Per day (12 to 15 mths)
" (A)	-	14s. 6d.	"
Leading Rate (B)	-	17s. 0d.	"
" (A)	-	19s. 0d.	"
Petty Officer (B)	-	22s. 0d.	"
3 yrs later (A)	-	24s. 0d.	"
Chief Wren (B)	-	26s. 0d.	"
2 yrs later (A)	-	27s. 6d.	"

Length of Service Pay.

After 3 yrs service	2/-	per pay.
After 6 yrs	"	"
" 9 yrs	1/9	"
" 12 yrs	1/9	"

Every 4 years one good conduct badge
- extra 3d per day.

4 days pay @ 10/6 £ 7. 7. 0 nat ins.
 4 days 'kit upkeep. All.' 12. 3. 5/-

 £ 1. 19. 3.
 2 weeks National Ins. 10. 0.

 £ 4. 9. 3.

Ord Rate.	£ 7. 9. 0	-	10/6.
Able (B)	£ 8. 16. 0	-	12/6.
(A)	£ 10. 2. 0	-	14/6.
L/Wren (B)	£ 11. 12. 0	-	17/0.
(A)	£ 12. 16. 0	-	19/0.
P.O. (B)	£ 14. 12. 0	-	22/0.

From the collection of
Meg Larvin (nee Murray)

Served in the branch from 1962 - 1966.

Meg's book number 1 - pay rates.



© Cloud Observers 2011

Compiled by MIS on behalf of Cloud Observers.